



Department
of Transport
and Planning

Medicinal Cannabis and Driving Resources for Health Professionals

Stakeholder Pack

NOVEMBER 2025

Before prescribing – think about driving



Medicinal Cannabis and Driving – Resources for health professionals

New resources are available for health professionals to:

- guide their decision-making about medicinal cannabis treatment with respect to safe driving
- support conversations with patients.

Developed by the Victorian Department of Transport and Planning, and based on current evidence and expert opinion, the resources include:

1. a [Decision Support Resource](#) to guide health professional management of impairment risk when driving
2. a [Driving Needs Checklist](#) to ensure systematic consideration of patient driving needs before prescribing
3. a [Patient Factsheet](#) to enable conversations with patients about road safety risks and their legal obligations under Victorian law.

This stakeholder pack provides information about the resources and how to use them in practice. We invite you to share this information with your colleagues, members and audiences.

We also invite you to get in touch with us regarding any additional opportunities to educate clinicians and patients about this important topic.

(Roadsafetyvictoria@transport.vic.gov.au)

In this stakeholder pack you will find:

- Key features of the three resources
- E-news story, including FAQs to tailor messaging to your audience
- Social media posts
- Consumer facing poster
- Where to find additional information

Visit the [Transport Victoria](#) website for more information.

Before prescribing – think about driving

Medicinal Cannabis and Driving – Key Considerations

As for any potentially impairing medication, it is important to consider the implications for safe driving as part of early and ongoing decision-making about treatment, to determine if medicinal cannabis is appropriate for someone with a driving need.

For medicinal cannabis there is an additional consideration. Under the current Victorian drug-driving laws, it is an offence for a person:

- to drive with any detectable amount of delta-9-tetrahydrocannabinol ($\Delta 9$ THC*) in their system
- to drive when impaired by any substance.

The new resources address and facilitate three key processes:

- Assessing the patient’s driving needs to ensure they are compatible with medicinal cannabis prescribing.
- Educating the patient about impairment risks and legal obligations.
- Considering individual impairment risks, including the cannabinoid type, formulation, route of administration and dose, as well as tolerance, metabolism, comorbidities and drug interactions.

* For the purposes of this pack and the resources, the term THC is used when referring to $\Delta 9$ THC.


1

Assess the patient's driving needs



2

Educate the patient about impairment risks and legal obligations



3

Consider individual impairment risks



Medicinal Cannabis and Driving – Resources Overview

Decision Support Resource

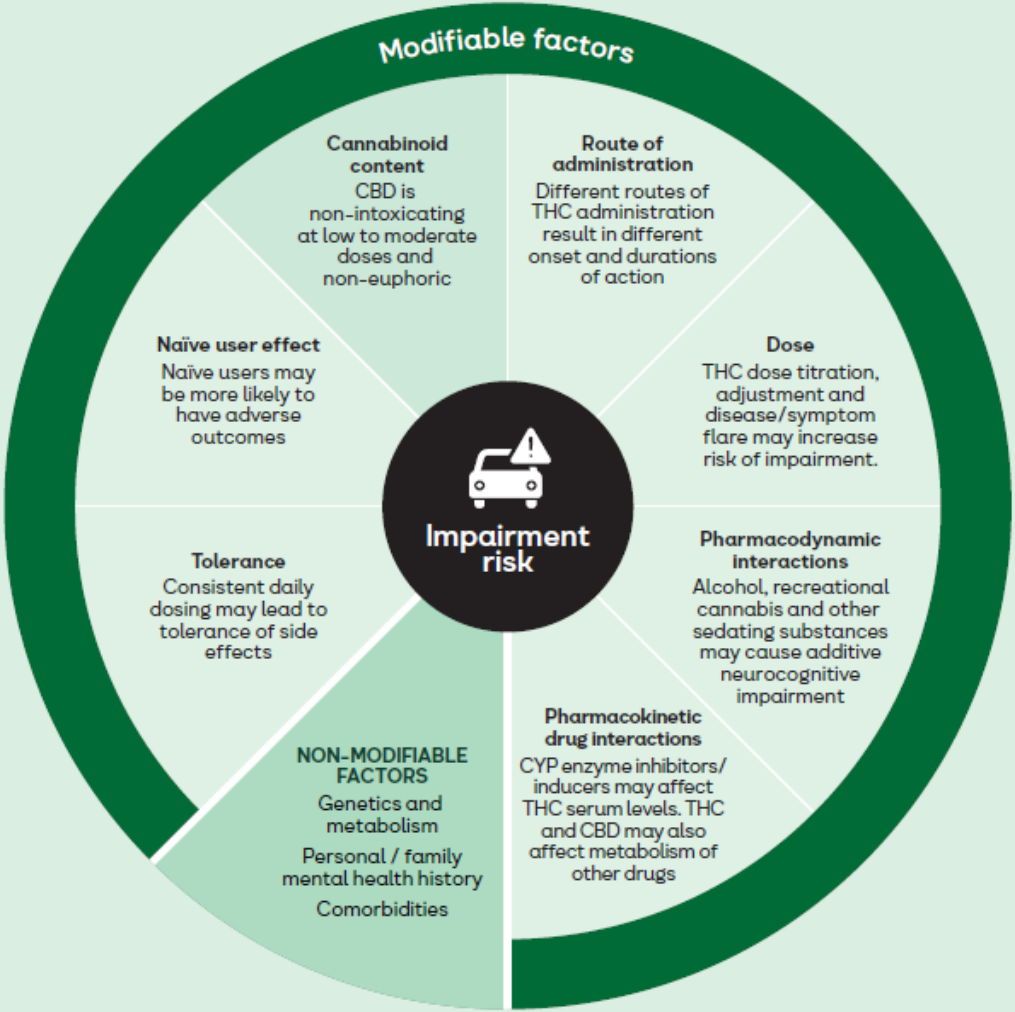
Designed with the busy clinician in mind, the Decision Support Resource summarises the key considerations for safe driving that are important in clinicians’ holistic prescribing and ongoing patient management decisions. The resource highlights the impairing effects associated with THC, the important legal considerations and the complex array of factors that may influence impairment for a particular patient.

The resource was developed with input from experts in the field, including prescribing clinicians to ensure it is evidence-based and practical.




Click on the left image to open

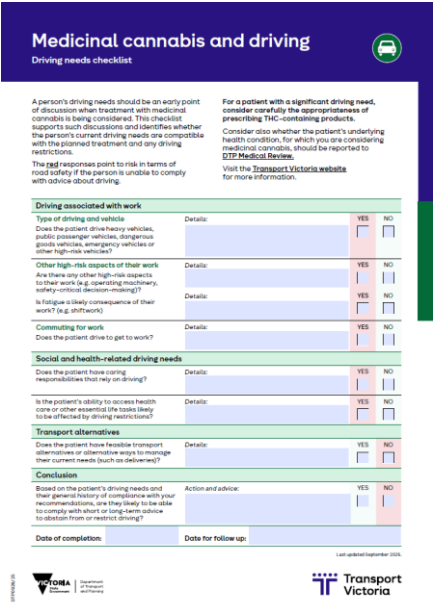
Factors influencing cannabis-related neurocognitive impairment (Eadie et al., 2021, MacCallum et al., 2022)



Medicinal Cannabis and Driving – Resource Overview

Driving Needs Checklist

This checklist guides the assessment of a patient's driving needs in the context of potential impairment and legal risks. This facilitates discussion and decision-making about the suitability of medicinal cannabis treatment. A completed checklist may provide evidence that the conversation about driving has taken place.



The checklist is titled "Medicinal cannabis and driving" with the subtitle "Driving needs checklist". It includes a car icon. The text explains that a person's driving needs should be an early point of discussion when treatment with medicinal cannabis is being considered. It also states that for a patient with a significant driving need, consideration should be given to the appropriateness of prescribing THC-containing products. The checklist is divided into several sections: "Driving associated with work", "Social and health-related driving needs", "Transport alternatives", and "Conclusion". Each section contains a table with questions and checkboxes for "YES" and "NO". The "Conclusion" section includes a field for "Action and advice" and a "Date of completion" field. The document is dated "Last updated September 2025" and features the "Transport Victoria" logo.



Click on the left image to open

IMAGE: Medicinal cannabis and driving – Driving needs checklist, Transport Victoria

Patient Factsheet

The patient factsheet reinforces professional advice about impairment risks and legal responsibilities to ensure patients are fully informed when making decisions about medicinal cannabis treatment.



The factsheet is titled "Medicinal cannabis and driving" with the subtitle "Factsheet October 2025". It includes a car icon. The text explains that if a patient has been prescribed medicinal cannabis for a medical condition or if they are considering medicinal cannabis treatment, it is important to understand what taking these medications means for their driving and their legal obligations. The factsheet provides information on medicinal cannabis products, including THC and CBD, and their effects on driving. It also discusses the legal implications of driving while impaired by medicinal cannabis. The factsheet is dated "Factsheet October 2025" and features the "Transport Victoria" logo.



Click on the left image to open

IMAGE: Medicinal cannabis and driving factsheet, Transport Victoria

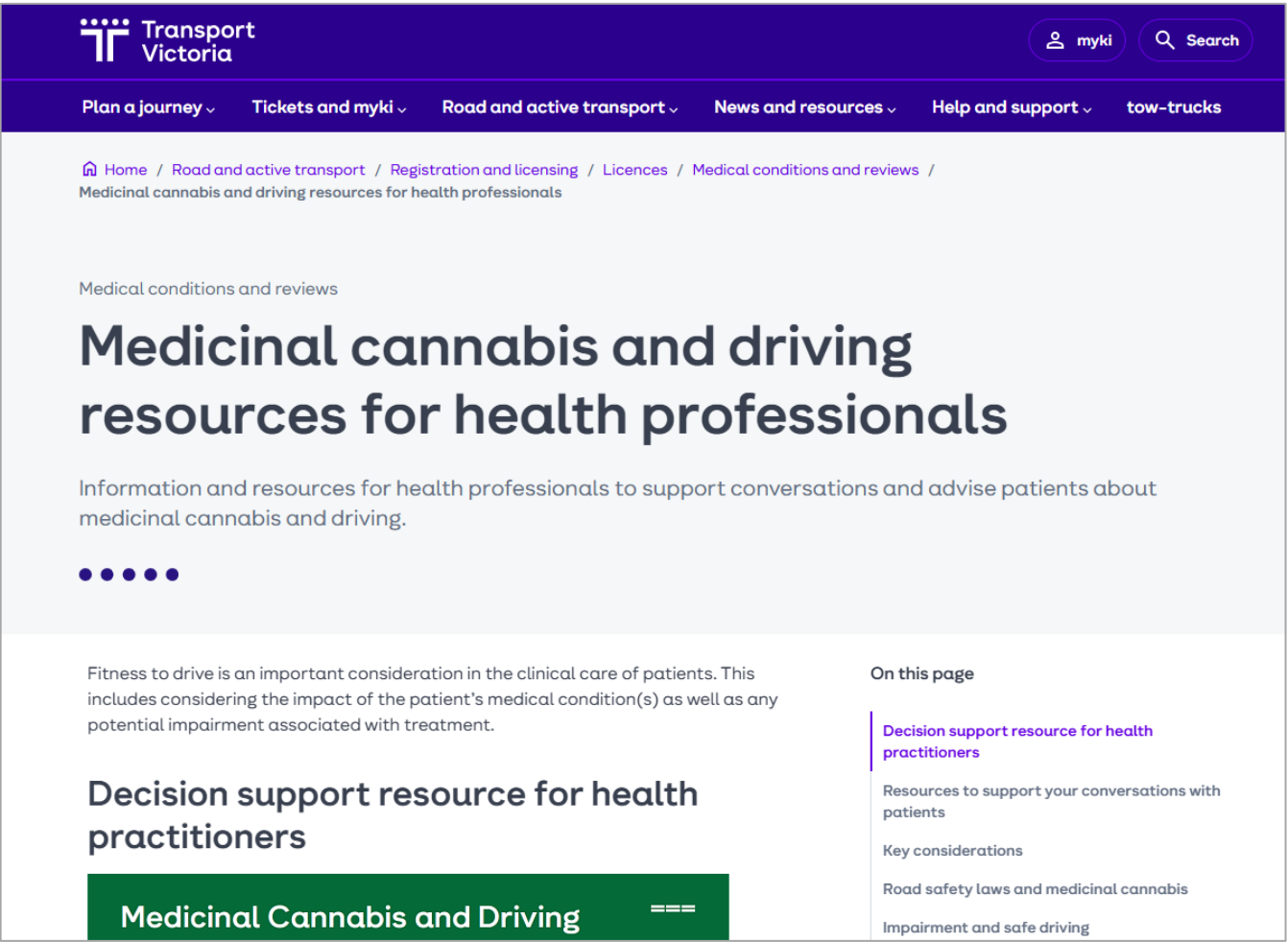
Medicinal Cannabis and Driving Resources – Communicate with your networks

Transport Victoria Website

All three resources are found on the Transport Victoria website, where [health professionals](#) and [consumers](#) can find information on legal requirements and other road safety considerations regarding medicinal cannabis and driving on Victoria’s roads. The Transport Victoria website also includes information about the general medical fitness to drive requirements and the medical review process.

Key website links:

- Transport Victoria – [Medicinal cannabis and driving – legislation](#)
- Transport Victoria – [Medicinal cannabis and driving – information for health professionals](#)
- Medicinal cannabis – [Better Health Channel](#)



▲ IMAGE: Transport Victoria website, <https://transport.vic.gov.au/road-and-active-transport/registration-and-licensing/licences/medical-conditions-and-reviews/medicinal-cannabis-and-driving-resources-for-health-professionals>

Medicinal Cannabis and Driving Resources – Communicate with your networks

E-news story

This information may be distributed within your networks. We suggest channels such as eDM, bulletin, email or newsletter. The following copy includes some frequently asked questions to suit the needs and interests of your target audience. Delete those that are not relevant. You'll find more in the FAQs section of the resource (page 14).

Medicinal cannabis and driving: New resources for clinicians

Whether you are an active prescriber of medicinal cannabis or you are seeking to manage your patients who are taking medicinal cannabis that has been prescribed elsewhere, it is important to consider the risks associated with driving.

New resources developed by Transport Victoria support early and ongoing consideration of impairment risk, helping you to include attention to driving as you provide safe and informed care by:

- Assessing patients' driving needs and ensuring they are compatible with the planned or prescribed treatment
- Educating patients about the impairment risks and their obligations under Victorian drug-driving laws
- Assessing and managing individual impairment risks, both at initial prescribing and throughout the course of treatment.

The resources are available on the [Transport Victoria website](#) and include:

1. A [Decision Support Resource](#) that guides clinicians through these three steps, with detailed information to support assessment and management of impairment risk and links to additional information and references
2. A [Driving Needs Checklist](#) that guides the assessment of a patient's driving requirements and can provide evidence that the conversation about driving has occurred.
3. A [Patient Factsheet](#) that facilitates conversations about driving risks and legal obligations.

Medicinal Cannabis and Driving Resources – Communicate with your networks

Frequently asked questions

I don't prescribe medicinal cannabis – how are these resources relevant to me?

Increasingly, we are hearing that clinicians are concerned about their patients seeking medicinal cannabis treatment outside their usual healthcare arrangements. These concerns include whether the treatment is appropriate and how it might affect other conditions and treatments that the medicinal cannabis prescriber may not be aware of. Impairments likely to affect driving or other safety-critical tasks are a further concern. The Transport Victoria resources support understanding of the impairment risks and other clinical risks. They help facilitate positive conversations with patients about their medicinal cannabis treatment and their driving needs.

Haven't the laws changed? Can a person now drive legally in Victoria if they have a legal prescription for medicinal cannabis?

From 1st March 2025, the laws in Victoria were amended, but it remains illegal for a person to drive with any detectable level of THC in their system, including from medicinal cannabis. The amendment grants Victorian Magistrates discretion in determining licensing penalties for people with a valid medicinal cannabis prescription. Magistrates will consider a range of evidence, including evidence of impairment. A prescription for medicinal cannabis alone will not preclude loss of licence. For more information, see the [Medicinal Cannabis and driving legislation content on the Transport for Victoria website](#).

My patients say they are not impaired when they take THC-containing medicinal cannabis. How do I manage that?

Patients' perceptions are not a reliable measure of their impairment, and the effect it may have on their driving. This is because impairment may not be evident until the driver is in an unexpected or complex situation requiring a rapid response. Patient reporting may also be influenced by concerns about driving restrictions. The Transport Victoria resources describe how THC affects various aspects of the driving task and provide a useful basis for discussions with patients.

Medicinal Cannabis and Driving Resources – Communicate with your networks

Frequently asked questions

Medicinal cannabis is not the only prescribed medication that affects driving. What is being done to manage these risks?

That is true, in fact, between 2007 and 2013 in Victoria, prescription drugs were involved in approximately 21 per cent of fatal road collisions.¹ In addition, between 2018 and 2022, 15 per cent of fatally injured drivers in Victoria were found to have THC in their system, acknowledging that medicinal use cannot be differentiated from recreational use in these findings.² The key message 'Think about driving before prescribing' is applicable to all potentially impairing medications. We are encouraging prescribers to routinely consider whether incompatibility between patients' treatment and driving needs will increase the likelihood of them driving when impaired. The Driving Needs Checklist is a helpful resource in this context.

What is being done to improve understanding of how medicinal cannabis affects safe driving?

There is limited evidence on the impact of medicinal cannabis containing THC on real-world driver performance when prescribed under the close management of a registered health professional. That is why the Victorian Government is funding the Medicinal Cannabis Closed-Circuit Track Trial to determine whether individuals who are prescribed medicinal cannabis can drive safely. It remains illegal in Victoria to drive with any detectable level of THC. More information can be found at:

[Medicinal Cannabis and Safe Driving Closed Circuit Track Trial | vic.gov.au](https://www.vic.gov.au/medicinal-cannabis-and-safe-driving-closed-circuit-track-trial)

¹Olaf H. Drummer, Suwan Yap, The involvement of prescribed drugs in road trauma, Forensic Science International, Volume 265, 2016, Pages 17-21, ISSN 0379-0738, <https://doi.org/10.1016/j.forsciint.2015.12.050>.

²Department of Transport and Planning, Victoria. Road Trauma in Victoria – 2024 Statistical Summary, Page 47 <https://www.vic.gov.au/sites/default/files/2025-08/Road-Trauma-in-Victoria-2024-Summary.pdf>

Medicinal Cannabis and Driving Resources – Communicate with your networks

Frequently asked questions

Do I need to advise patients to report to the Department of Transport and Planning (DTP) Medical Review when I prescribe medicinal cannabis?

Fitness to drive is an important consideration in the clinical care of patients, guided by the national [Assessing Fitness to Drive Standards](#). This includes considering the impact of the patient's medical condition(s) and disabilities, the benefits and potential impairments associated with treatments, and the patient's functional abilities, including their capacity to compensate and the need for rehabilitation. While the main consideration for reporting to DTP Medical Review is the nature and impact of the underlying medical condition, any potential impairment associated with treatment should also be considered, including treatment with medicinal cannabis.

For more information about medicinal cannabis and driving, as well as guidance on the latest road safety rules, visit transport.vic.gov.au/medicinal-cannabis-and-driving

Medicinal Cannabis and Driving Resources – Communicate with your networks

Social media posts



Medicinal cannabis
and driving



Suggested copy version 1:

New resources are available to guide health professionals in managing the road safety risks associated with medicinal cannabis. These provide evidence-based decision support and tools to facilitate conversations with patients about their driving needs, impairment risks and legal obligations. See the [Transport Victoria website](#) for more information.

#BeforePrescribingThinkAboutDriving



Medicinal cannabis
and driving



Suggested copy version 2:

Fitness to drive is an important consideration when prescribing medicinal cannabis or any potentially impairing medication. For guidance in assessing patients' driving needs and managing impairment risks, see the new [Transport Victoria resources](#).

#BeforePrescribingThinkAboutDriving



Before
prescribing -
think about
driving



Suggested copy version 3:

Are your patients at risk? With many patients seeking medicinal cannabis treatment outside their usual healthcare arrangements, health professionals can access new resources providing decision support and tools to facilitate conversations with patients about driving. See the [Transport Victoria website](#) for more information.

#BeforePrescribingThinkAboutDriving

Additional social tile image options are included on page 13.

Medicinal Cannabis and Driving Resources – Communicate with your networks

Consumer-facing poster

Raising patient awareness about the impairment risks associated with medicinal cannabis and their legal responsibilities is vital for their own safety and that of other road users.

These posters aim to encourage patients to consider the risks and to discuss driving with their healthcare practitioner.

The message is important for people who might be sourcing medicinal cannabis outside their usual healthcare arrangements.

[Click here to download the poster \(in A4 or A3\)](#)



Medicinal cannabis can affect your driving, even if you don't feel impaired. It's against the law in Victoria to drive with THC in your system. Speak to your health practitioner about what's right for you.

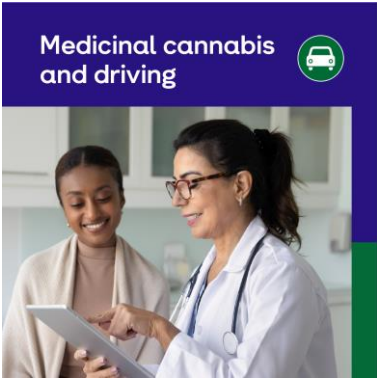
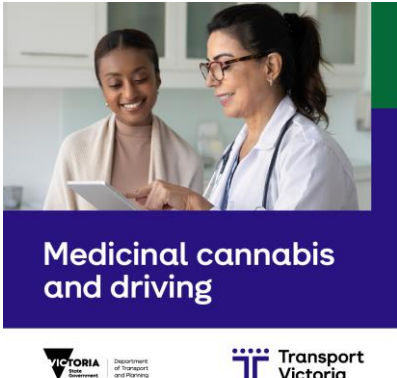
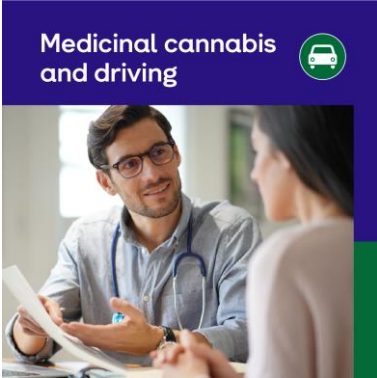


Find out more.
Scan or visit
transport.vic.gov.au

Medicinal Cannabis and Driving Resources – Communicate with your networks

High-resolution images

Please download and use high-res images in your communications ([click here for link](#)).



Medicinal Cannabis and Driving – Legislation amendment in Victoria

Key points

- The amendment to legislation introduced on 1 March 2025 grants Victorian Magistrates discretion as to whether to cancel a licence if a driver has a valid prescription for medicinal cannabis.
- It is still illegal for someone to drive with any amount of THC in their system, including from medicinal cannabis.
- Magistrates will consider available evidence including whether the individual has a valid prescription for medicinal cannabis at the time of detection, and evidence of impairment while driving.
- The amendment does not guarantee medical cannabis prescription holders will avoid losing their licence.
- The change does not affect existing impairment drug-driving laws in Victoria.
- Penalties for drug-driving can also include monetary fines and the requirement to attend a Behaviour Change Program.

Information for patients

Patients who are prescribed medicinal cannabis and drive need to know:

- THC in medicinal cannabis can result in impairment.
- It is illegal to drive with any amount of THC in your system, including from medicinal cannabis.
- Fines and loss of licence may apply to anyone detected with THC while driving or riding.
- Challenging an infringement notice in court does not guarantee that medicinal cannabis prescription holders will avoid losing their licence.
- Regardless of a court outcome, drivers will still be charged with a drug-driving offence and fines will still apply.

Thank you

For more information, please contact
Road Safety Victoria:
roadsafetyvictoria@transport.vic.gov.au



Department
of Transport
and Planning